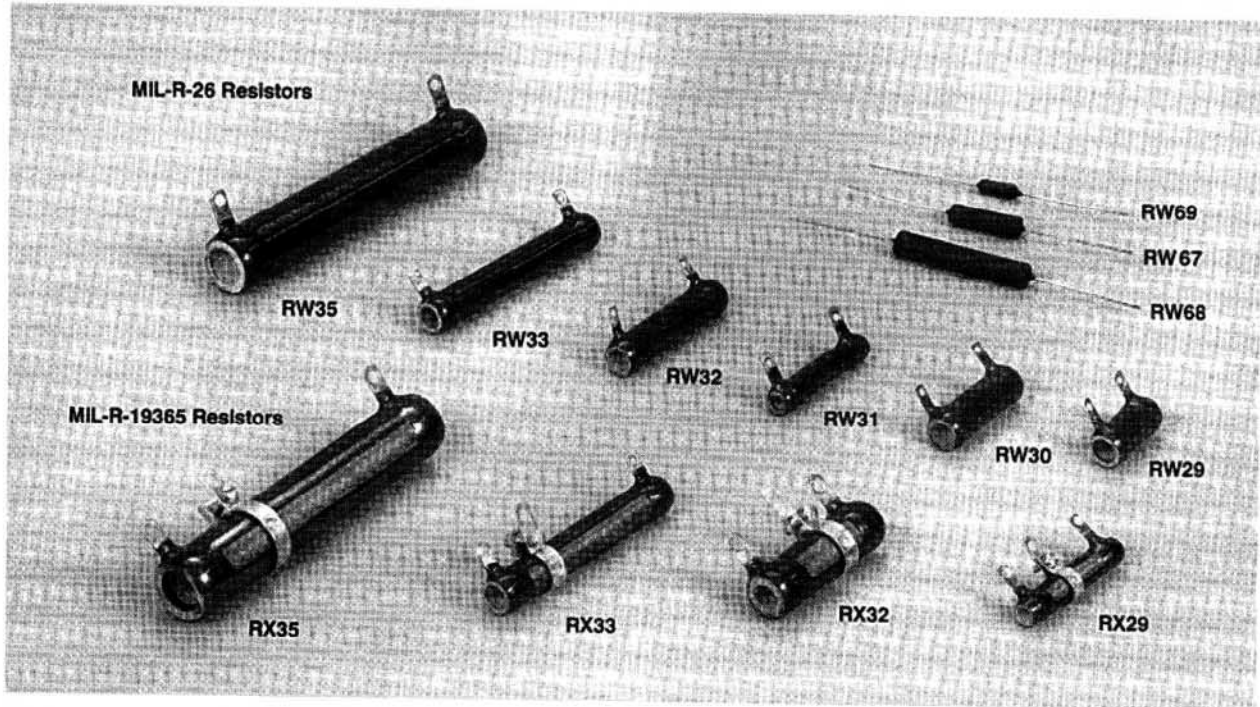


RW, RX

MILITARY TYPES  
MIL-R-26 & MIL-R-19635

Power Types, Wirewound • Fixed & Adjustable Tubular • Axials



## Military Resistor Selection Guide

Wattage Rating Characteristic G <sup>1</sup> V	Military Type Number	Resistance Value <sup>③</sup>		Core		Finished Size (Inches)			
		Minimum Ohms	Maximum Ohms	Length Dim. A	O.D. Dim. B	I.D. Dim. C	Width Dim. D	Height Dim. E	Hole Dim. H

### Fixed Tubular MIL-R-26 Drawing A Vitreous Coated

8	11	RW29	0.10	5,600	1 3/4	7/16	3/16	3/16	21/32	.090
8	11	RW30	0.10	2,700	1	9/16	1/4	3/16	23/32	.090
10	14	RW31	0.10	6,800	1 1/2	9/16	1/4	3/16	23/32	.090
12	17	RW32	0.10	10,000	2	9/16	1/4	3/16	23/32	.090
18	26	RW33 <sup>②</sup>	0.10	18,000	3	9/16	1/4	3/16	23/32	.090
38	55	RW35 <sup>②</sup>	0.10	43,000	4	29/32	1/2	3/16	29/32	.166
54	78	RW36	0.10	56,000	4	1 1/4	3/4	1/4	1 7/32	.170
78	113	RW37	0.10	91,000	6	1 1/4	3/4	1/4	1 7/32	.170
110	159	RW38	0.10	150,000	8	1 1/4	3/4	1/4	1 7/32	.170
145	210	RW47	0.10	180,000	10 1/2	1 1/4	3/4	1/4	1 7/32	.170

### Axial Leads MIL-R-26 Drawing B Silicone Coated

5	6.5	RW67	0.10	3,600	1 1/16	11/32	—	—	—	—
8	11	RW68	0.10	8,200	1 15/16	13/32	—	—	—	—
2.5	3	RW69	0.10	910	9/16	1/4	—	—	—	—

### Adjustable MIL-R-19635 Drawing C Vitreous Coated

—	11	RX29	1	470	1 3/4	7/16	3/16	3/16	21/32	.090
—	17	RX32	1	910	2	9/16	5/16	3/16	23/32	.090
—	26	RX33	1	1,500	3	9/16	5/16	3/16	23/32	.090
—	55	RX35	1	3,600	4	29/32	1/2	1/4	15/16	.166

① Current MIL Spec. requires "V", however, "G" is available for replacements. ② Can be Center-Tapped.

③ Select resistance value from approved Standard Values table.

RW, RX

MILITARY TYPES  
MIL-R-26 & MIL-R-19635

MIL-R-26 designation is the Military specification for fixed tubular vitreous coated and axial lead silicone coated power wirewound resistors. MIL-R-19635 describes the adjustable tubular equivalent to the fixed. Military specifications usually describe stricter construction, design and performance details than commercial. Additionally, all military resistors are tested periodically by a government approved outside testing laboratory.

**Features:**

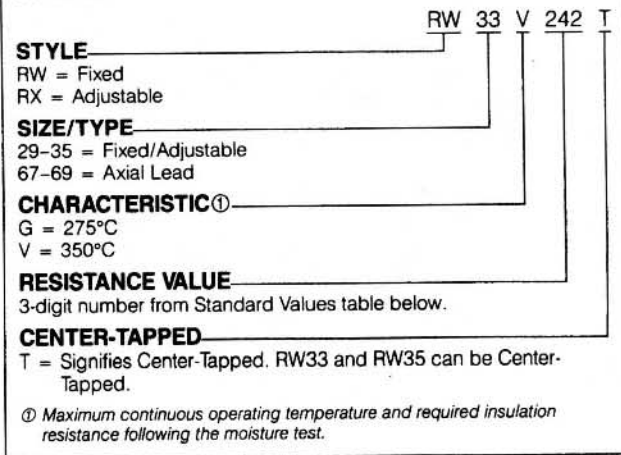
- All sizes feature low Temperature of Coefficient of resistance for all values.
- 5% tolerance supplied on values 1 ohm and greater.
- All welded construction assures ruggedness.
- Mount using Push-in brackets or Thru-Bolts.

**Characteristics:**

- Nominal resistance range: 0.1 to 43K ohms, depending on model.
- Tolerance:  $\pm 5\%$ ,  $>1$  ohm, standard.
- Temperature Coefficient: Silicone Vitreous  
 $<1$  ohm:  $\pm 90$  ppm/ $^{\circ}$ C.  $\pm 260$  ppm/ $^{\circ}$ C.  
 1 to 9.99 ohms:  $\pm 50$  ppm/ $^{\circ}$ C.  $\pm 150$  ppm/ $^{\circ}$ C.  
 10 to maximum:  $\pm 20$  ppm/ $^{\circ}$ C.  $\pm 90$  ppm/ $^{\circ}$ C.
- Dielectric Strength: 1000 VAC.

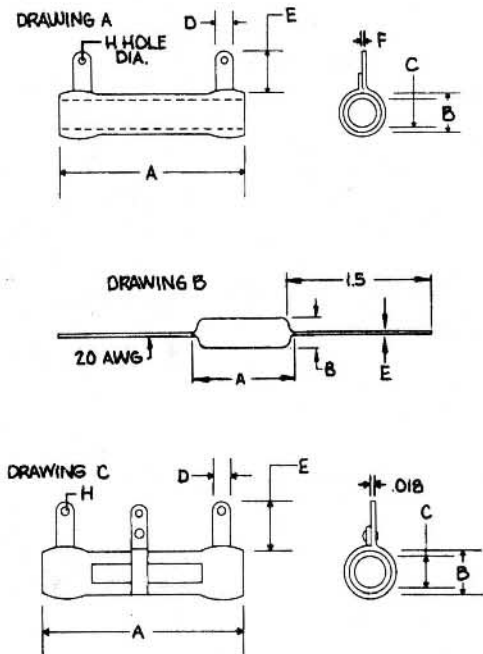
**ORDERING INFORMATION**

Military resistors are identified by special numbers called Type Designations. Composed of letters and digits, the Type Designation completely describes the resistor. To order, please use the following ordering scheme.



**Standard Military Resistance Values.**

Use three digit "Code" to specify resistance required in ordering Type Designation.



Ohms	Code	Ohms	Code	Ohms	Code	Ohms	Code	Ohms	Code	Ohms	Code
.10	R10	1.0	1R0	10	100	100	101	1000	102	10K	103
		1.1	1R1	11	110	110	111	1100	112	11K	113
.12	R12	1.2	1R2	12	120	120	121	1200	122	12K	123
		1.3	1R3	13	130	130	131	1300	132	13K	133
.15	R15	1.5	1R5	15	150	150	151	1500	152	15K	153
		1.6	1R6	16	160	160	161	1600	162	16K	163
.18	R18	1.8	1R8	18	180	180	181	1800	182	18K	183
		2.0	2R0	20	200	200	201	2000	202	20K	203
.22	R22	2.2	2R2	22	220	220	221	2200	222	22K	223
		2.4	2R4	24	240	240	241	2400	242	24K	243
.27	R27	2.7	2R7	27	270	270	271	2700	272	27K	273
		3.0	3R0	30	300	300	301	3000	302	30K	303
.33	R33	3.3	3R3	33	330	330	331	3300	332	33K	333
		3.6	3R6	36	360	360	361	3600	362	36K	363
.39	R39	3.9	3R9	39	390	390	391	3900	392	39K	393
		4.3	4R3	43	430	430	431	4300	432	43K	433
.47	R47	4.7	4R7	47	470	470	471	4700	472		
		5.1	5R1	51	510	510	511	5100	512		
.56	R56	5.6	5R6	56	560	560	561	5600	562		
		6.2	6R2	62	620	620	621	6200	622		
.68	R68	6.8	6R8	68	680	680	681	6800	682		
		7.5	7R5	75	750	750	751	7500	752		
.82	R82	8.2	8R2	82	820	820	821	8200	822		
		9.1	9R1	91	910	910	911	9100	912		