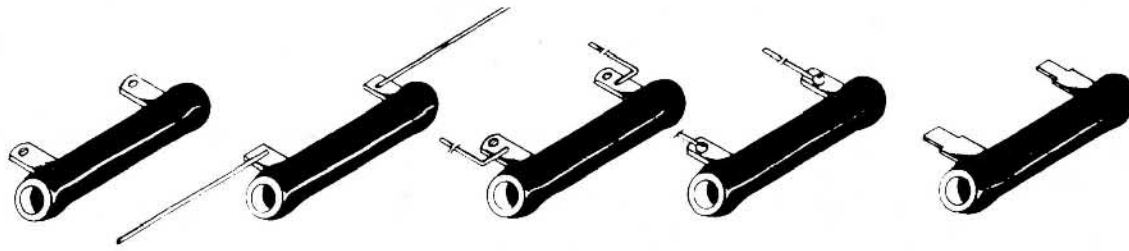


FV 1, FS 1, FV 1L, FS 1L, FV 1S, FS 1S, FV WL, FS WL

VITREOUS OR SILICONE

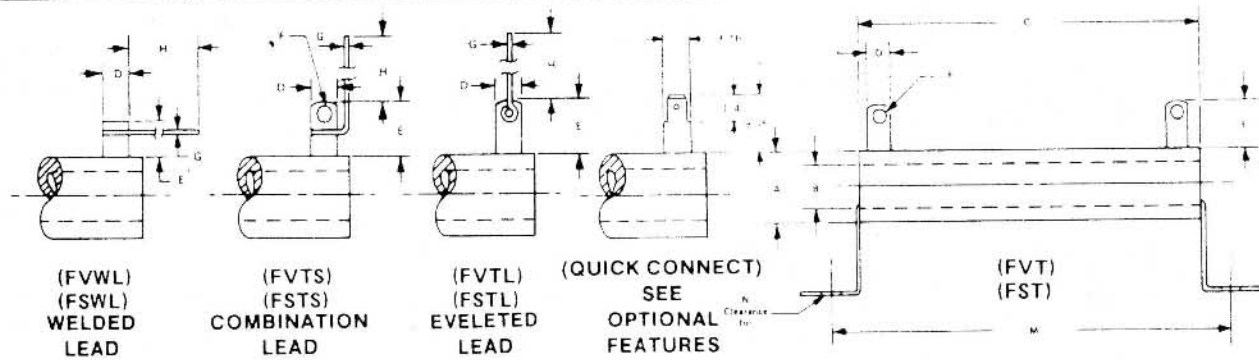
5 WATTS thru 20 WATTS



| TYPE | WATT | CORE | | | TERMINAL | | | LEADS | | MOUNTING | |
|---------|------|------|------|-------|----------|------|------|-------|---|----------|------|
| | | A | B | C | D | E | F | G | H | M | N |
| FVT-5 | 5 | 5/16 | 3/16 | 1 | 3/16 | 7/16 | .104 | - | - | 1 7/16 | 6-32 |
| FVTL-5 | 5 | 5/16 | 3/16 | 1 | 3/16 | 7/16 | - | .032 | 2 | 1 7/16 | 6-32 |
| FVTS-5 | 5 | 5/16 | 3/16 | 1 | 3/16 | 7/16 | .104 | .032 | 2 | 1 7/16 | 6-32 |
| FVWL-5 | 8 | 5/16 | 3/16 | 1 | 1/8 | 1/4 | - | .032 | 2 | 1 7/16 | 6-32 |
| FVT-10 | 12 | 5/16 | 3/16 | 1 3/4 | 3/16 | 7/16 | .104 | - | - | 2 3/16 | 6-32 |
| FVTL-10 | 12 | 5/16 | 3/16 | 1 3/4 | 3/16 | 7/16 | - | .032 | 2 | 2 3/16 | 6-32 |
| FVTS-10 | 12 | 5/16 | 3/16 | 1 3/4 | 3/16 | 7/16 | .104 | .032 | 2 | 2 3/16 | 6-32 |
| FVWL-10 | 12 | 5/16 | 3/16 | 1 3/4 | 1/8 | 1/4 | - | .032 | 2 | 2 3/16 | 6-32 |
| FVT-20 | 20 | 7/16 | 1/4 | 2 | 3/16 | 7/16 | .104 | - | - | 2 1/2 | 6-32 |
| FVTL-20 | 20 | 7/16 | 1/4 | 2 | 3/16 | 7/16 | - | .040 | 2 | 2 1/2 | 6-32 |
| FVTS-20 | 20 | 7/16 | 1/4 | 2 | 3/16 | 7/16 | .104 | .040 | 2 | 2 1/2 | 6-32 |
| FVWL-20 | 20 | 7/16 | 1/4 | 2 | 1/8 | 1/4 | - | .040 | 2 | 2 1/2 | 6-32 |

NOTE: The above chart applies to both vitreous and silicone coated resistors. The "type" nomenclature shown is for vitreous coating. When ordering silicone coating substitute the letter "S" for the letter "V" in the type.

EXAMPLE FVT - VITREOUS FST - SILICONE



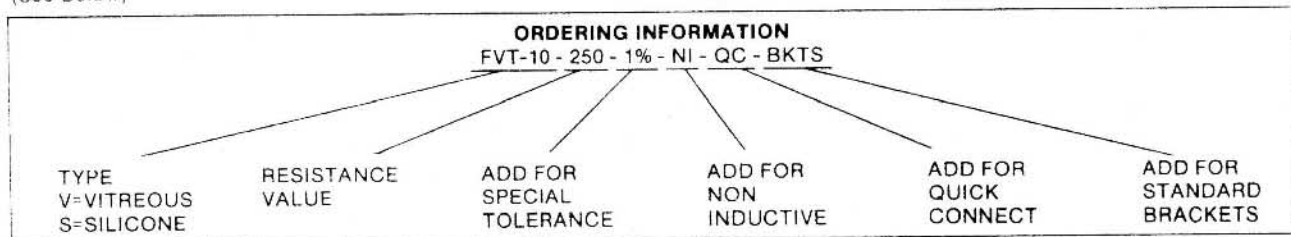
OPTIONAL FEATURES AVAILABLE

RESISTANCE TOLERANCE Standard tolerance is $\pm 5\%$ for 1 ohm and greater and $\pm 10\%$ for less than 1 ohm. If other than standard tolerance is required add this tolerance to the part number. (See Below)

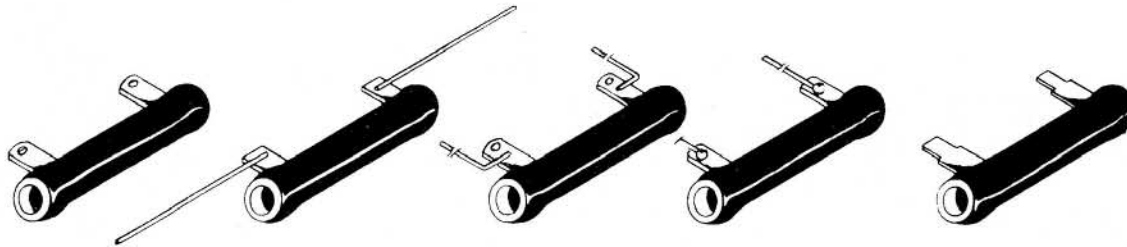
NON-INDUCTIVE Ayerton-Perry type non-inductive winding is available. When required add "NI" to the part number. (See Below)

QUICK CONNECT TERMINALS: Resistors with a core O.D. (Dim. "A") of 5/16" can be supplied with a 3/16" wide x .020 thick male quick connect terminal. When required add "QC" to the part number. (See Below)

MOUNTING BRACKETS: Push-in friction-grip mounting brackets are available, as shown above. When required add "BKTS" to part number. (See Below)



5 WATTS thru 20 WATTS



ENGINEERING DATA AND SPECIFICATIONS

CORE: Steatite ceramic

STANDARD TERMINALS: The tab/lug, eyeleted lead, combination lead and welded lead types are provided pre-tinned.

QUICK CONNECT TERMINALS: Resistors with a core O.D. (Dem. "A") of 5/16" can be supplied with a 3/16" wide x .020 thick male quick connect terminal. When required add "QC" to the part number. (See ordering information.)

COATING: Available in vitreous enamel or silicone. (See ordering information.)

MOUNTING BRACKETS: Push in, friction grip mounting brackets are available. (See ordering information.)

TEMPERATURE COEFFICIENT: 0 ± 400 ppm/°C 1 Ohm to 20 Ohms. 0 ± 260 ppm/°C 20 Ohms or above. (Special TC's available. Consult factory.)

DIELECTRIC WITHSTANDING VOLTAGE: Measured from terminals to mounting brackets. 1000 VAC.

INDUCTANCE: Standard parts have single layer inductive windings. Ayrton-Perry type non-inductive winding is available. (See ordering information.)

OVERLOAD: 10 x rated wattage for 5 seconds.

TOLERANCE: $\pm 5\%$ is standard for 1 Ohm and greater. $\pm 10\%$ for less than 1 Ohm. Special tolerances available. (See ordering information.)

DERATING: Wattage rating is based on 25°C free air rating. For higher ambient temperatures, use charts below.

